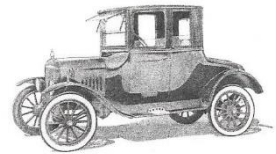


# Band Chatter



Volume 10, Issue 4

April 2018

## THE 1912 MODEL T

By Royce Peterson



As Ford reached the end of its 1911 model year on September 31, 1911 the automotive industry knew one thing for certain. The Model T Ford was the best selling car on the planet! Ford had sold about 40,000 Model T's during the 1911 model year, about 25% more than it had sold during the 1909 and 1910 model years combined! Nearly the entire chassis and engine had been revised during the 1911 model year, making production easier and the cars more reliable. No doubt the 1912 season was going to be even better for Ford.

Continued on Page 5

